

Port Security Information for the General Public and Port Users



Where are the Security Regulated areas at the Port?

LRZ – Landside Restricted Zone: This is the area from the Security Gates to the wharf including both entrances (horseshoe road) and incorporates the whole structure down to the sea bed.

WRZ – Waterside Restricted Zone: This is an area extending from the Wharf head out 60m in all directions. As well as all the area and water beneath the LRZ on the wharf approaches. Vessels must not enter the WRZ without prior permission from Port Management.

Maritime Security Zone (MSZ) – The combined area of LRZ and WRZ.

Exclusion Zone: As part of the Port's safety management plan, a 60m exclusion zone is permanently in place around the Wharf. Vessels are required to remain clear unless entering for authorised operational reasons. **Unauthorised entry to an MSZ – Fine 50 penalty units \$5500**

Security Levels

Level 1 (Normal): the level for which minimum appropriate protective security measures will be maintained within the Port of Wyndham.

During level 1 – normal security protective measures will apply such as MSIC cards, restricted access to the MSZ's (LRZ and WRZ) and the exclusion zone around the wharf area.

Breaching of Port Security Zones would jeopardise the security and operation of the port and anyone caught breaching the rules faces heavy fines. Port staff have been instructed to be on the lookout for breaches and have adopted a zero tolerance.

Who needs an MSIC (Maritime Security Identification Card) and why?

Anyone working unescorted in a maritime security zone needs an MSIC. This includes people both working on an irregular or seasonal basis and have an operational need to access the LRZ at least once a year. An MSIC shows that the card holder is background checked and cleared to enter and work in secure areas. An MSIC card must be worn at or above waist height, at the front or side of the body, or on a band around the upper arm.

How do I get an MSIC Card?

The Wyndham Port can assist you with an MSIC Card. Contact the Port Office for details.

What are the MSIC Card Responsibilities?

- You must display your card at all times when accessing the MSZ's.
- If your MSIC card is lost or stolen, you must notify the issuing body within 7 days, (including a stat dec/ Police report). **10 penalty units - \$1100 fine**
- The issuing body must be notified within 30 days of a change of name. **5 penalty units - \$550 fine**
- An MSIC must be returned to the issuing body within 30 days of expiry. **10 penalty units - \$1100 fine**

Who does not need an MSIC?

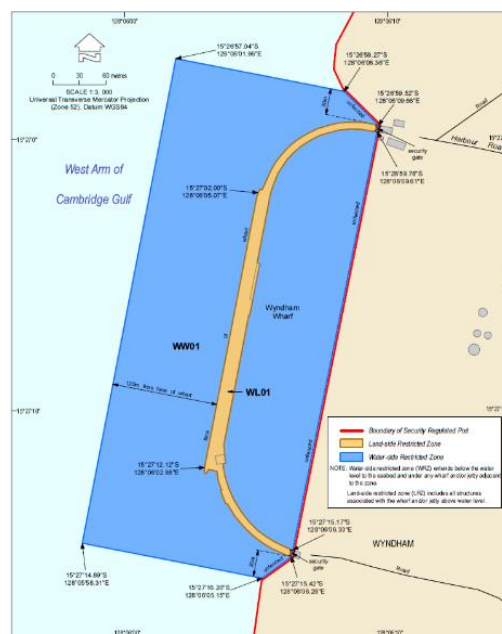
Australian Defence Force members wearing their defence force ID, emergency personnel responding to an emergency and law enforcement officers (including customs officers).

What is a Port Access Card?

In the very near future, anyone requiring unescorted access on the Wyndham Port must have a Port Access Card in addition to their MSIC Card. We will advise you in due course when this is necessary. Additional Security gates are being added to the road entrances of the Port. You will need a Port Access Card to get past these gates once they are installed.

Does Wyndham Port have Security Guards?

Wyndham Port has dedicated Security Guards when required. Over half of our workforce is made up of fully trained security personnel. They are all authorised to control access to the restricted zones at any time.



How can I get further information?

Contact the Wyndham Port Office on 0891611203 or after hours 0409373920.